

SISTRADE implements manufacture control system for **COTESI** in Espinho.

SISTRADE, IT specialised company has developed a manufacture control system for COTESI – Companhia de Têxteis Sintéticos S.A., company belonging to the group VIOLAS.

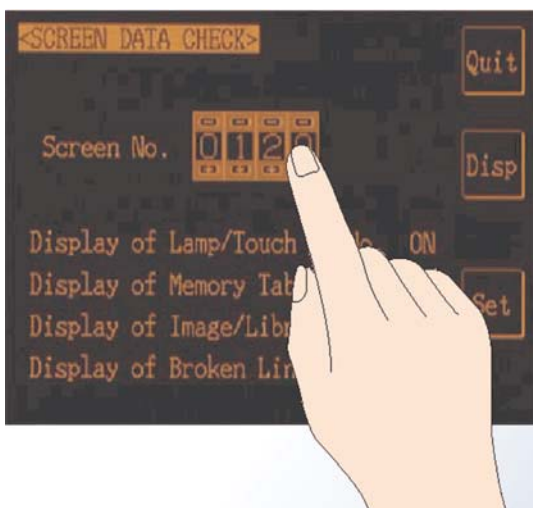
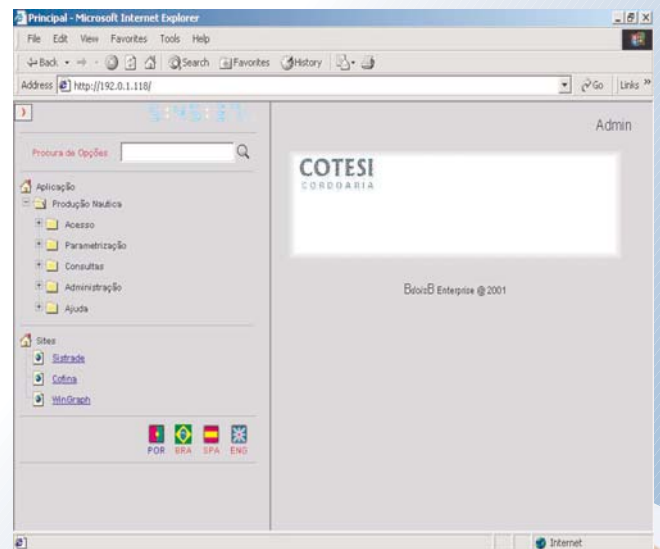
As an answer to Cotesi's needs in what comes to manufacture control of their manufacturing unit placed in Espinho, SISTRADE has committed once again, to study the problem presented, keeping in sight to find the best solution for the customer.

The great aim was to avoid the volume of paper that used to go around the plant and obtain information in a faster and flaw less way, integrating all the collected information with Cotesi's central system in AS/400.

The solution found by SISTRADE was based on touch screen terminals spread all over the plant and the sensorization of the entire machine park.

The means and equipments involved on this project were: Cotesi's staff for the assembly of the system's infrastructure; sensorization of a park with about 170 machines; implementation of a state of the art OMRON automaton; placement of three touch screen terminals also OMRON; engineering and programming work from SISTRADE's technical team.

SISTRADE has used once again its own technology, with web-oriented development, implementing a management and manufacturing control application with the interfaces in a browser.



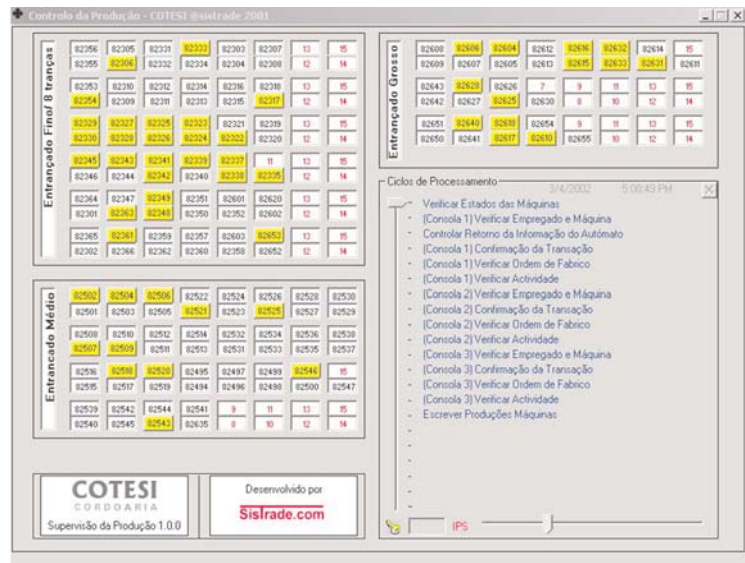
The project involved the development of several applications, namely the automaton reading/writing system, automaton program, application for the terminals, application of manufacturing management, replicate of the terminal system in PC and interface with Cotesi's central system.

Cotesi got, therefore, the following features: maintenance of auxiliary tables of the system, graphical supervision of the manufacture, detailed query of the ongoing manufacturing orders, collection dialog for entering manufacturing orders, presences register, manufacture query in real time, etc.

Cotesi supplied the necessary workforce for the assembly of the entire infrastructure. However, Sistrade maintained a constant accompaniment of each and every technical intervention.

The terminals placed on the plant are small LCD screens with touch-screen function and a laser bar code reader. Every information register may be introduced just with the help of the bar code reader, which turns the data entering much easier.

Next to each terminal there are printed documents with a bar code, namely list of employees, list of operations and list of machines/sections. Every time a new manufacturing order is entered, a manufacture folder is created which will accompany the entire manufacturing process.



The information registers can be made on the terminals as well as on the "manufacture supervisor" PC. The dialog presented on the PC is identical to the one presented on the terminals. After entering the manufacturing order, the system starts counting manufacturing time, but the counting of the meters and kg produced only begins when the employees says so. In this way, the setup time is ignored.

It is to point out that, every time that the machine stops in an irregular way, this stoppage is registered on the system, warning the employee.

This whole system is developed with state of the art technology, allowing the access to the application from anywhere in the world.

