



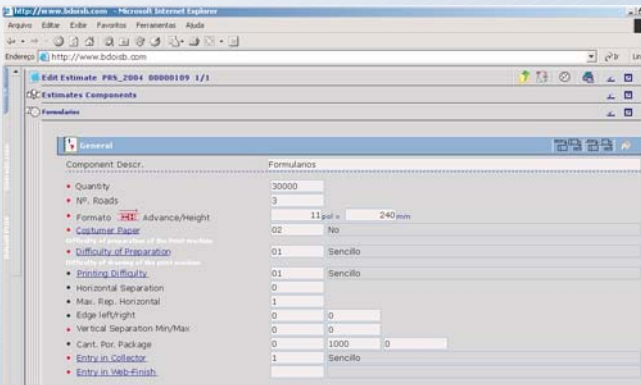
## SisTrade® Print in a Forms Company

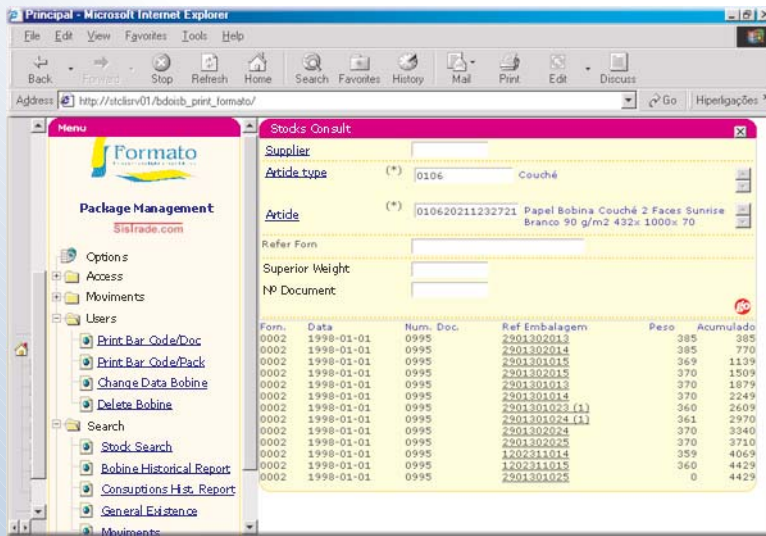
Formato – Formulários Múltiplos Comerciais, S. A. was founded 23 years ago, in 1979, specializing in forms manufacturing. Formato has had an extraordinary evolution, becoming one of the biggest companies in this area. Due to the company evolution and to new technologies, Formato felt the need to implement a management and manufacturing control system - Sistrade® Print. Taking into consideration the types of work Formato does, it was necessary to proceed to some additional developments in Sistrade® Print, to support this customer's specific needs. However, Sistrade® Print was afterwards prepared for Graphic Arts companies with this type of work. Besides Sistrade® Print traditional modules, estimates and manufacture modules, Sistrade has implemented in Formato, a supervision and control system for the machines, through an automaton and several sensors connected to the machines to be controlled, in order to obtain from these real manufacture elements. The integration with the financial software already existing, in this case the Primavera software, was also made.

SISTRADO – Software Consulting, S. A. is an IT company, disposing of a management system for the Printing Industry. Sistrade® Print is a specific ERP for this industrial sector, based on the most recent information technologies, such as the access through Internet Browser, and the use of Microsoft SQL Server, and with features that range from Estimating Industrial control and supervision, passing through Ecommerce and stocks management.

### Estimates

By making the Estimate, Sistrade® Print calculates the best imposition according to the type of work, format and machine to be used. In Sistrade® Print we can find a workflow system for estimate's approval. This approval may only be intern and interact with external entities through e-mail. When the estimate is approved, the work is automatically displayed at the Manufacturing module.





## Reel Management

According to Formato's needs, Sistrade® Print does the stocks and reel management.

When the paper comes into the factory, the user immediately reproduces and prints a barcode that will accompany the paper during all manufacturing phase, allowing Formato to analyse its historical report.

Through an automation system, Formato is able to determine the reel consumption. This process begins when the paper enters the machine, and with the help of a bar code reader the reels movements begin. With the automatons, Formato will be able to know, in real time, the amount of paper spent in that manufacturing order.

## Ink Management

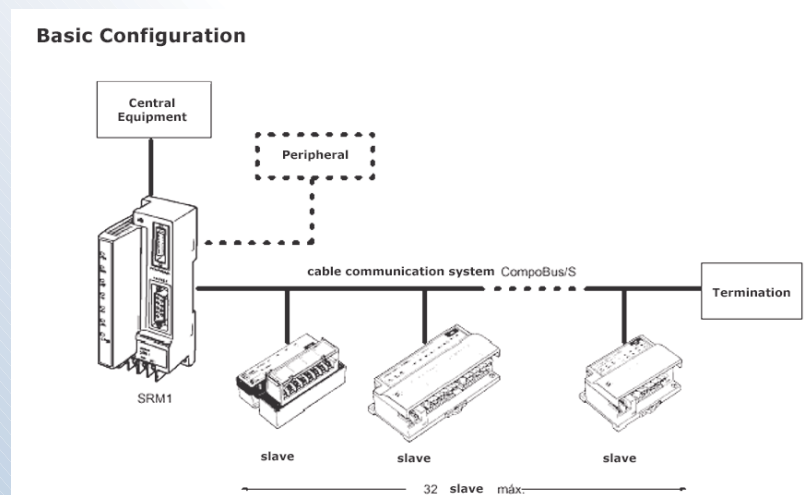
According to Formato's needs, Sistrade® Print manages, the amounts of ink according to the defined pantones on Sistrade® Print. The automation of the ink consumption is made through a scale connected to Sistrade® Print.

## Data Acquisition

This system great goal is to obtain information in real time, in faster way, avoiding the use of human resources for that effect. The solution implemented by Sistrade went through the implementation of OMRON automation net with direct link to the machines electric boards.

The Data Acquisition project demanded the development of two applications, namely the automaton reading/writing system in Visual Basic and the PLC programming in CX-Programmer.

Formato's team was responsible for the assembly of a twelve machine park with the permanent accompaniment of every technical intervention by Sistrade's team.



**Sistrade® Print is a management and manufacturing control ERP, for the Printing Industry, based on Web interfaces**