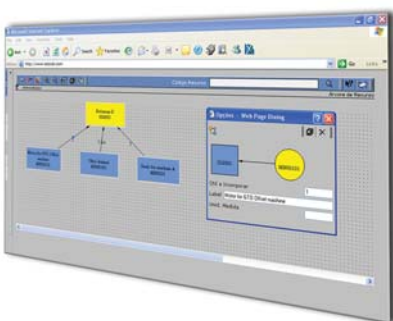


## SISTRADÉ<sup>®</sup> PRINT Equipment Maintenance Integrated with ERP | MIS

### MAIN FEATURES

- :: Equipment Maintenance
- :: Equipment Tree
- :: Maintenance Plans Definition
- :: Maintenance Plans
- :: Preventive Maintenance
- :: Malfunctions and Reactive Maintenance
- :: Integrating with Production Plan



In today's Industries is mandatory to exist a special attention about equipment maintenance, once investments in resources are very high and production stops can result in great money losses!

With Sistrade<sup>®</sup> Print, the enterprise has an integrated maintenance control system, machines and parts, from maintenance plan definition, recording preventive and reactive maintenance to Maintenance Orders Issuing.

All this information in maintenance orders can be cross-related with production scheduling system, preventing time reservation for maintenance orders to be fulfilled.

### EQUIPMENT TREE

With growing equipment complexity, maintenance is no longer planned for all its parts but for each "sub-equipment" necessities. Answering to this requisite, SISTRADÉ<sup>®</sup> developed a system supported on Equipment Tree. With this feature, easily one can obtain all resource equipments and define a maintenance plan for each one of those, thus, for the resource itself.

### EQUIPMENT MAINTENANCE MANAGEMENT

Through Sistrade<sup>®</sup> Print, maintenance orders can be created resulting from any event. Generally, maintenance can be defined as preventive or reactive. Preventive is that, somehow, one can predict and known to happen. On the other side, Reactive is that results from not know or not expected events (sometimes, causing resources to stop). After being reported to Maintenance department, the manager prepares the maintenance plan where can associates each one of them, defines times, materials needs, etc.. This information can be cross-related with production plan preventing that time is allocated to maintenance.

### PREVENTIVE MAINTENANCE

To make maintenance easier, plans can be defined.

These plans, with variable timescale (time, km, liters, pounds, etc.), can generate alerts which can be sent, for instance, to an e-mail box.

### REACTIVE MAINTENANCE

All malfunction and non-conformity detected while machines are running are inserted in the system, generating a reactive maintenance request. Attached to these requests, all information about that event is gathered, making problems resolution easier.

## STOCKS AND SPARES MANAGEMENT

Stocks and Spares management module allows parts and components tree generation for each resource, assign materials and spares to a maintenance order in particular and, special feature, manage warehouse spare movements.

## MAINTENANCE DATA CAPTURE

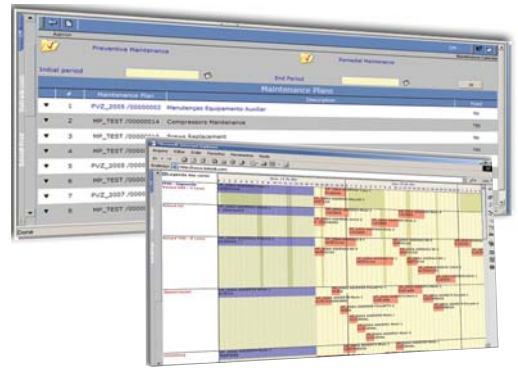
Using Production Data Capture, system can monitorize maintenance. To do so, the employee just have to read a bar codes in Maintenance Order. This procedure can be used to capture information about actions and materials and spares, once each one of this elements are defined in the system with a code bar. Examples are "Begin", "Lunch-Break", "Part XPTO", "Oil Type XYZ", "Testing" and "Done". At the end, all materials and times are recorder in the system and associated with a certain Maintenance Order.

## MAINTENANCE COSTS

Maintenance Cost Analysis gives information about all associated incumbencies. Crossing this information with production data, optimized maintenance plans can be done. This will reduce maintenance/production costs once in-time maintenance reduces wastes and production mistakes.

## MAINTENANCE ORDERS

Both Preventive and Reactive Maintenance, while being processed and validated, generates a Maintenance Order. With Sistrade® Print, during Maintenance Order generating, one can define all information associated with maintenance fulfillment. In these conditions are machine data, needed parts and materials, maintenance manuals, implied HR, etc.



## INTEGRATING WITH SCHEDULING

To those industry branches where maintenance is more intense, SISTRADÉ developed a GANNT chart which turns maintenance plan easier. Production chart can be cross-related with maintenance one, generating an over-view with valuable information for those who manage and decide.



### Modules of ERP | MIS Sistrade® Print system:

- :: Commercial Management & Estimating
- :: CRM
- :: Stocks & Purchases Management
- :: Production Management
- :: Scheduling - Production Planning
- :: SCADA - Supervision & Data Acquisition
- :: Balanced ScoreCards
- :: E-business
- :: Mobile Business
- :: Quality Control
- :: Equipment Maintenance
- :: Electronic Invoicing
- :: Banks Management
- :: JDF - Job Definition Format

### Sistrade® Solutions for industry of:

- :: Commercial Print
- :: Flexible Packaging
- :: Boxes
- :: Labels
- :: Digital
- :: Envelopes
- :: Forms
- :: Editorial/Publisher
- :: Metalworking
- :: Textile
- :: Food



SISTRADÉ - Software Consulting, S.A. | [www.sistrade.com](http://www.sistrade.com) | [inov@sistrade.com](mailto:inov@sistrade.com)  
**PORTO:** R. Manuel Pinto de Azevedo 64B, 4100-320 Porto, Portugal | T. +351 226 153 600  
**LISBON:** Av. António Augusto de Aguiar 148, 4ºC, 1050-021 Lisbon, Portugal | T.+351213805082  
**MADRID:** Ribera del Loira, 46 - Bloque 2, Planta 0, 28042 Madrid, Spain | T.+34 915030083