

## Sistrade<sup>®</sup> PRINT Mobile Business Integrated with ERP | MIS

Mobility is, for most people, associated with cell phones. In this case, cell phones are related with Mobility as PCs are to Informatics. In Industry's case, no matter what is the branch, Mobility has as objective to optimize and facilitate information workflow and processing.

Aiming to support Production Management in Job Orders Scheduling and fulfilling Delivery plans, SISTRADE offers to its clients a tool for production operations planning.

### MAIN FEATURES

- :: Mobile Business
- :: Orders
- :: Job Orders
- :: Customer Information
- :: CRM
- :: Stock Analysis
- :: Mobility Integrated Solutions

### MOBILE BUSINESS

Mobile Business module is a SISTRADE service which allows information access in cell phones, featuring information listing on orders, job orders, third-parties (clients and suppliers), warehouse materials, etc.. Users of this system can be salespeople, clients or other entities. To access, users have to login, with password, accessing information and system features authorized to.

### MOBILE BUSINESS ORDERS

Using this feature, system shows all information about orders like code, series number, state, client, sales price, quantities, delivery plans, payment conditions, produced quantities, delivery forecasting, etc.. All this features can be accessed, by salespeople, without any restriction. If one company wants to give system access to their clients, they might be restricted, for instance, to order state.

### MOBILE BUSINESS JOB ORDERS

All job orders can be consulted in the system, which displays all information like delivered vs invoiced quantities, unit price and job order global value. Finally, jobs to be produced, and respective production forecasting, are listed.

### MOBILE BUSINESS CLIENT

All generic Client's information is displayed by the system, like address (different addresses are possible, facilitating delivery and invoicing plans), phone and fax number, waiting offers and estimates, etc. finance information can also be displayed like Current Accounts listings and Waiting Payments (Collection). When accessing Current Accounts, all entries are displayed and Debts can be sorted by age (due dates!).



## MOBILE BUSINESS CRM

Module Customer Care Relationship Management is a e-business solution gathering all features and processes regarding relation between the company and its clients. This solution allows events report to be used by salespeople and also list and record:

- :: Prospection;
- :: Contacts;
- :: Prospect/Contact Communication;
- :: Prospect/Contact address.

## MOBILE BUSINESS STOCK QUERYING

This functionality displays information, to salespeople and clients, about products and their actual stock in warehouse. With this functionality users can make several searches like:

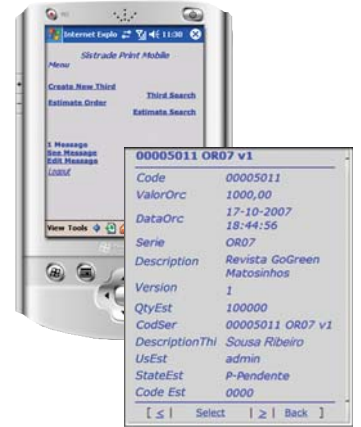
- :: Article code and description;
- :: Article Tree- by family cod.

## INTEGRATION WITH EL ERP | MIS

All these solutions can be integrated with other management systems, especially with Sistrade® Print, also developed by SISTRADE. However, there are other systems that SISTRADE can integrate with Sistrade® Print Mobile.

## INDUSTRY AND ENTERPRISE MOBILE INTEGRATED SOLUTIONS

Besides these mobility solutions, SISTRADE is available to study, case by case, its clients' systems and develops Information Systems fulfilling each application requisites. Having a capable team of engineers, SISTRADE has solutions for several cases. Next there are some cases presented.



### Modules of ERP | MIS Sistrade® Print system:

- :: Commercial Management & Estimating
- :: CRM
- :: Stocks & Purchases Managemet
- :: Production Management
- :: Scheduling - Production Planning
- :: SCADA - Supervision & Data Acquisition
- :: Balanced ScoreCards
- :: E-business
- :: Mobile Business
- :: Quality Control
- :: Equipment Maintenance
- :: Electronic Invoicing
- :: Banks Management
- :: JDF - Job Definition Format

### Sistrade® Solutions for industry of:

- :: Commercial Print
- :: Flexible Packaging
- :: Boxes
- :: Labels
- :: Digital
- :: Envelopes
- :: Forms
- :: Editorial/Publisher
- :: Metalworking
- :: Textile
- :: Food

### WAREHOUSE MANAGEMENT

- Control of entries and exits of materials from warehouses
- Picking & Packing List
- Raw-Materials automatic countin

### SALES

- Electronic estimating and invoicing
- Orders State Remote Access
- Delivery Plan, Payment Collection State and Price Comparison
- Sales Points Data Capture
- Stock Replacement Needs

### REMOTE MONITORING

- Access to real-time state of production (anomalies record, on-going operations)
- Times and Production Costs Control
- Remote redefinition of production plan (remote scheduling)

