

## Sistrade<sup>®</sup> Print Scheduling Production Planning

To help production/human resources managers scheduling job orders/tasks and fulfilling delivery schedules, SISTRADE developed a tool called Sistrade<sup>®</sup> PRINT Scheduling. This tool has as input confirmed job orders/tasks and as output scheduled job orders/tasks.

Either in the Industry market or in the Services and Public Administration market, this tool helps the organization to schedule, control and plan their activities resource by resource.

It can attribute priorities per job type/task type and/or per work centre (machine or human resource) and per customer/service. The jobs/tasks to be scheduled will appear, in a descending order, according to the selected priority criteria.

After that it can schedule only part of a job/task by signalling the Manufacturing Stage/ Department wish to schedule and then attributing the respective work centre to perform the job/ task.

The next step is to separate/ distribute the quantity of product/ service through the several available work centres. The final step will be to attribute a sequential order to the operations/ tasks to be performed in order to fulfil the job/ task. Once performing these steps, the job/ task is automatically scheduled in the Gantt Chart.

In those situations where it might be needed reschedule a job/ task, it can be made by identifying the job/ task in the Gantt Chart and then performing a Drag-and-Drop to the desired new position in the schedule. Once done, and the Gantt Chart is refreshed, automatically all the priorities and precedence's of that job/ task are calculated and adjusted in the Gantt Chart, so that does not have any conflicts in any work centre.

All these features and functionalities are performed in a simple web browser, exactly the same way as navigating through the Internet, thus making the Scheduling an easy and intuitive tool to work with.

Furthermore, if there is a data acquisition/ workflow system to control the production/ service, our Scheduling solution can be integrated in such way that it will show the real progression of a job/ task execution, online and in real time.

If there are any delays, the following jobs/ tasks, are automatically updated too. This is a product that cannot work isolated, it must be complemented with Sistrade<sup>®</sup> PRINT Production Management Module or, integrated with any other compatible information system. All Sistrade<sup>®</sup> PRINT's application development is based in web oriented a tool which allows to access the application in a quick and easy way, from anywhere and at any time.

### THE MAIN FEATURES OF SCHEDULING

- :: Production/Service Main Plan
- :: Job Orders and/or Orders/Tasks Scheduling
- :: Integration of Scheduling with Stocks/ Service Levels
- :: Job Orders/Tasks Visualization in a GANTT Chart
- :: Work Load Chart in Table or Graphic Format
- :: Machine/Human Resource Capacity Evaluation Between Dates
- :: Integration with Stocks Management and Equipment Maintenance

## SCHEDULING SETUP

- :: Choose job orders/ Tasks and select job/ Task components to schedule;
- :: Select which quantity to be produced in which work centre;
- :: Select manufacturing stages / Departments to schedule;
- :: Change operations / Tasks sequence.

## SCHEDULING

- :: Job orders / Tasks scheduling;
- :: On line and real time follow up based on data acquisition/ JDF/ Automation;
- :: Real time indexing to job/ Task start job/ Task finish and job/ Task delays to production scheduling;
- :: Drag and drop to re-schedule.

## PROJECTOR JOBS SIMULATIONS

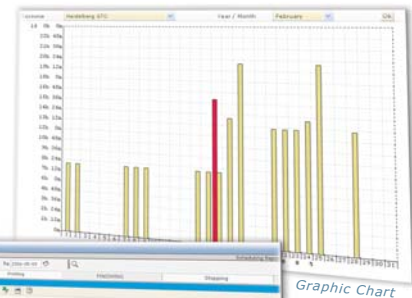
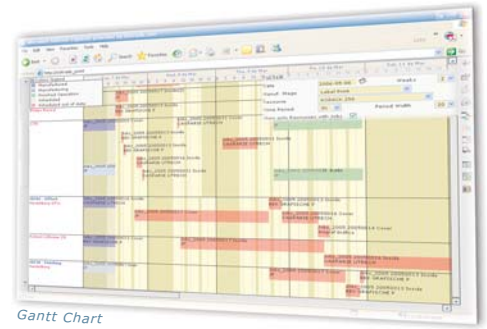
- :: Drag and drop job orders / task to alternative work centre;
- :: Change production to other work centre;
- :: Change start date;
- :: Change quantities to produce;
- :: Validate forecasted delivery schedule.

## WORK LOAD CHART

- :: Installed capacity evaluation by work centre;
- :: Availability vs. Capacity graphical analysis;
- :: Availability to produce a given quantity;
- :: Visualization in different types of reports.

## OTHER FUNCTIONALITIES

- :: Export to Excel;
- :: Define priority criteria;
- :: Change time view;
- :: Visualization by manufacture stage/department/work centre.



Export data to Excel

### Modules of ERP | MIS Sistrade® Print system:

- :: Commercial Management & Estimating
- :: CRM
- :: Stocks & Purchases Management
- :: Production Management
- :: Scheduling - Production Planning
- :: SCADA - Supervision & Data Acquisition
- :: Balanced ScoreCards
- :: E-business
- :: Mobile Business
- :: Quality Control
- :: Equipment Maintenance
- :: Electronic Invoicing
- :: Banks Management
- :: JDF - Job Definition Format

### Sistrade® Solutions for industry of:

- :: Commercial Print
- :: Flexible Packaging
- :: Boxes
- :: Labels
- :: Digital
- :: Envelopes
- :: Forms
- :: Editorial/Publisher
- :: Metalworking
- :: Textile
- :: Food

