

Enterprise Management System for Digital Print Graphical Arts

MAIN CHARACTERISTICS

- :: Estimates in cameras and plotters
- :: Continuous automatic calculation of the imposition
- :: Imposition calculation with simple or mixed orientation of the items
- :: Optimization of the support costs: canvas, paper, etc.
- :: Detailed calculation of costs
- :: Simulation of other quantities
- :: Workflow for estimates approval
- :: Application of margins and economic/financial analysis of the estimate
- :: E-mailing the estimate to the customer

EXAMPLES OF JOBS

- :: Catalogues
- :: Magazines
- :: Posters
- :: Flyers
- :: Wide Format
- :: Stand-Ups

Sistrade[®] Print is an ERP | MIS developed by SISTRADE based on the most recent IT tools, giving access to all features through Internet, simplifying the company management from wherever you may be.

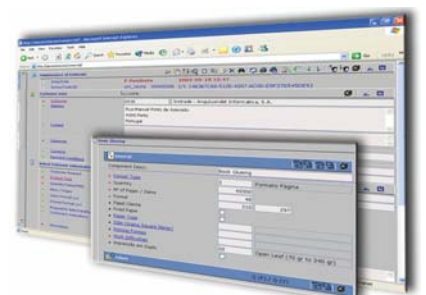
We are talking about a *web-oriented* system, with a 100% WEB browser interface and a SQL Server database.

Sistrade[®] Print specializes in the digital printing area. This project comes from the need to implement Sistrade[®] Print in graphical arts and printing industries which work in the Wide Format, Small Format and booklets digital printing areas. It is a completely customizable application, becoming very flexible to new specifications.

ESTIMATE HEADER

:: A header where all data referring to the customer is recorded, namely, the customer's name, address, salesman, payment conditions, expedition data, quantity, estimate's description, delivery deadline, among others;

- :: Technical data about the job to perform, for example, type of format, final format, type of support, support gramage, masses, separation, overlapping, etc;
- :: Information about other specifications;
- :: Allows doing copies of previous estimates;
- :: Worklow, obbeying a predefined sequence of approvals;
- :: Gives origin to the job order after estimate approval.



JOB DEFINITION

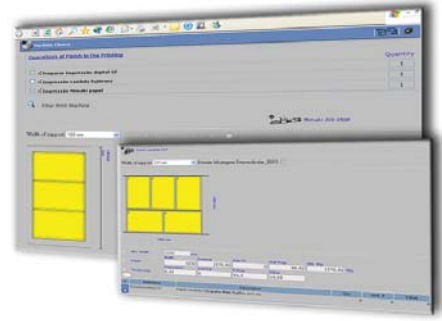
- :: Introduction of items fully adjusted to the customer;
- :: Definition of the type of format and quantity;
- :: Definition of the customer's support;
- :: Information about the type of support;
- :: Values of left, right, top and bottom masses;
- :: Value of the separation (mm) between jobs;
- :: Value of the horizontal and vertical overlapping (mm).

PRINTING / IMPOSITION CALCULATION

- :: The system suggests the machine that should print, according to the selected type of support;
- :: By selecting the required machine, the estimator may analyze the printing imposition suggested by the system;
- :: The system automatically calculates the printing imposition, according to the different item orientations;
- :: The user may select different support widths and verify the new printing imposition calculated by the system;
- :: The machine's printing speed is estimated by the system, according to the type of support and the previously made customizations.

ESTIMATE'S

- :: General costs with components and setup;
- :: Printing costs, evaluating the measures on the imposition and the printing time;
- :: Costs with colors, depending on the job area;
- :: Costs with resources/machines, setup times and respective requirements;
- :: Operations, including subcontract stages;
- :: Global cost identifying cost/benefit;
- :: Agent and salesmen commissions;
- :: Application of financial margins, with margin indexes, commissions, administrative costs, set costs, rappel, etc.;
- :: Financial indicators.



OPERATIONS AND MATERIALS

- :: The system indicates the operations to perform according to the previously selected machine;
- :: Attribution of estimated operation costs;
- :: Makes possible to change the operations to perform by manufacturing stage;
- :: Presents the materials to consume.

OTHER QUANTITIES

- :: Simulation of other quantities, including margins (salesman, agent, company, etc.);
- :: Determination of the cost and sale price for each quantity;
- :: Ability to simulate several quantities, at the same time, in a few seconds.

Modules of ERP | MIS Sistrade® Print system:

- :: Commercial Management & Estimating
- :: CRM
- :: Stocks & Purchases Management
- :: Production Management
- :: Scheduling - Production Planning
- :: SCADA - Supervision & Data Acquisition
- :: Balanced ScoreCards
- :: E-business
- :: Mobile Business
- :: Quality Control
- :: Equipment Maintenance
- :: Electronic Invoicing
- :: Banks Management
- :: JDF - Job Definition Format

Simulating other quantities allow the estimator to foresee the costs and benefits this may have in case the customer will require several quantities. All this is possible thanks to the previously made customization of the raw materials and resources costs.



Sistrade® Solutions for industry of:

- :: Commercial Print
- :: Flexible Packaging
- :: Boxes
- :: Labels
- :: Digital
- :: Envelopes
- :: Forms
- :: Editorial/Publisher
- :: Metalworking
- :: Textile
- :: Food



SISTRADÉ - Software Consulting, S.A. | www.sistrade.com | geral@sistrade.com
PORTO: R. Manuel Pinto de Azevedo 64B, 4100-320 Porto, Portugal | T.+351 226 153 600
LISBON: Av. António Augusto de Aguiar 148, 4°C, 1050-021 Lisbon, Portugal | T.+351213805082
MADRID: Ribera del Loira, 46 - Bloque 2, Planta 0, 28042 Madrid, Spain | T.+34 915030083