



Enterprise Management System for Printing Industries for Flexible Packaging Flexography and Rotogravure

MAIN FEATURES

- :: Estimating every type of job
- :: Cylinders and cliché management
- :: Detailed calculation of the estimate costs
- :: Product Technical DataSheet management
- :: Other quantities
- :: Workflow for estimate approval
- :: Margins application and economic/financial analysis of the estimate
- :: Emailing the estimate to the customer

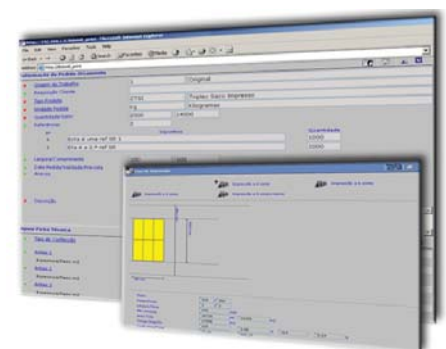
JOB EXAMPLE

- :: Flexible Packaging
- :: Flexible Label
- :: PVC

Sistrade[®] PRINT is an ERP developed by SISTRADE in WEB Browser, based on the most recent information technologies, such as the use of Microsoft SQL Server. Sistrade[®] PRINT has specialized in Flexography & Rotogravure printing. This project appeared from the need to implement Sistrade[®] PRINT in the graphical arts and printing industries which work with Flexography and/or Rotogravure. It is a completely customized application, becoming more flexible. There are some solutions specially developed for flexography and/or rotogravure estimating, according to the actual needs of each company.

ESTIMATE HEADER

- :: A header with all the customer-related information, namely the name, address, salesman, payment conditions, shipping data, quantity, estimate's description, delivery date, among others;
- :: Workflow, obeying to a pre-defined approval sequence;
- :: Technical Maintenance, where we can find global data related to the customer;
- :: Automatically creates a Job order, after estimate approval;
- :: CRM data with the monthly consumption;
- :: Information about the estimate offer containing the general characteristics of the estimated job;
- :: Support to the technical datasheet exposing the type of production, materials and machine's special features.



DEFINITION OF THE PRINTING PARAMETERS

- :: Setting the printing machine with all its features;
- :: Detailed record of all the manufacturing stages, which go from the printing stage, out of line varnishing, laminating, die-cutting until the final result is obtained with the total of costs;
- :: Definition of the production times;
- :: Subcontracts management;
- :: Ability to edit the type of estimate's attachments.

TECHNICAL DATASHEET

- :: The technical datasheet allows storing all the information related to the production of the previously recorded and lately approved estimate;
- :: It obeys a pre-established workflow before its status is modified;
- :: There are multiple chapters with information about raw materials, printing, assembly, extrusion, control, laminating, rewinding, production and packaging.

CYLINDERS MAINTENANCE

- :: Enables to perform all the management associated to each cylinder;
- :: To know its actual status;
- :: Measures and consumptions;
- :: Stopping and using dates, etc..

GRAPHICAL PROCESS

- :: Constitution of the graphical elements;
- :: Definition of the type of font and dimensions;
- :: Definition of colors and cylinders, with measures and tolerances.

CALCULATION OF THE ESTIMATE COSTS

- :: General component and setup costs;
- :: Printing costs, evaluating the measure of the imposition, tracks, dyeing area, times;
- :: Costs of the out of the line Varnishing, with its setup times, printing type;
- :: Die-Cutting and Production stage;
- :: Operations, including the subcontract stages, opening of sections and graphical drawing;
- :: Exhaustive summary of the costs, showing the cost for each category;
- :: Global cost with cost/advantage identification;
- :: Detailed values of the estimate costs;
- :: Application of the financial margins, with margin index, commissions, administrative costs, fixed costs, rappel, etc.;
- :: Financial indicators.



Modules of ERP | MIS Sistrade® PRINT system:

- :: Commercial Management & Estimating
- :: CRM
- :: Stocks & Purchases Management
- :: Production Management
- :: Scheduling - Production Planning
- :: SCADA - Supervision & Data Acquisition
- :: Balanced ScoreCards
- :: E-business
- :: Mobile Business
- :: Quality Control
- :: Equipment Maintenance
- :: Electronic Invoicing
- :: Banks Management
- :: JDF - Job Definition Format

Sistrade® Solutions for industry of:

- :: Commercial Print
- :: Flexible Packaging
- :: Boxes
- :: Labels
- :: Digital
- :: Envelopes
- :: Forms
- :: Editorial/Publisher
- :: Metalworking
- :: Textile
- :: Food

The simulation of other quantities allows the estimator to foresee the costs and benefits this may have in case the customer desires more quantities. All this is possible thanks to the previously made customization of materials and resources costs.



SISTRADe - Software Consulting, S.A. | www.sistrade.com | inov@sistrade.com
PORTO: R. Manuel Pinto de Azevedo 64B, 4100-320 Porto, Portugal | T. +351 226 153 600
LISBOA: Av. António Augusto de Aguiar 148, 4°C, 1050-021 Lisboa, Portugal | T.+351213805082
MADRID: Ribera del Loira, 46 - Bloque 2, Planta 0, 28042 Madrid, Espanha | T.+34 915030083