

Quality Control



Inspect. Correct. Prevent.

QUALITY CONTROL

- **Ensure quality of production**
- **Raw materials**
- **Semi-manufactured**
- **Finished products**
- **Corrective & preventive management**





MAIN FEATURES

Costs

Inspection & Test

Non-Conformity Correction

Quality Norm

Certificate Issue

Equipment Calibration



STRIVE FOR PERFECTION

Quality Control ensures that services and products are compliant with the previously required specifications.

SISTRADE Quality Control is applied on processes, raw materials, semi-finished and finished goods.

WHY SISTRADE QUALITY CONTROL?



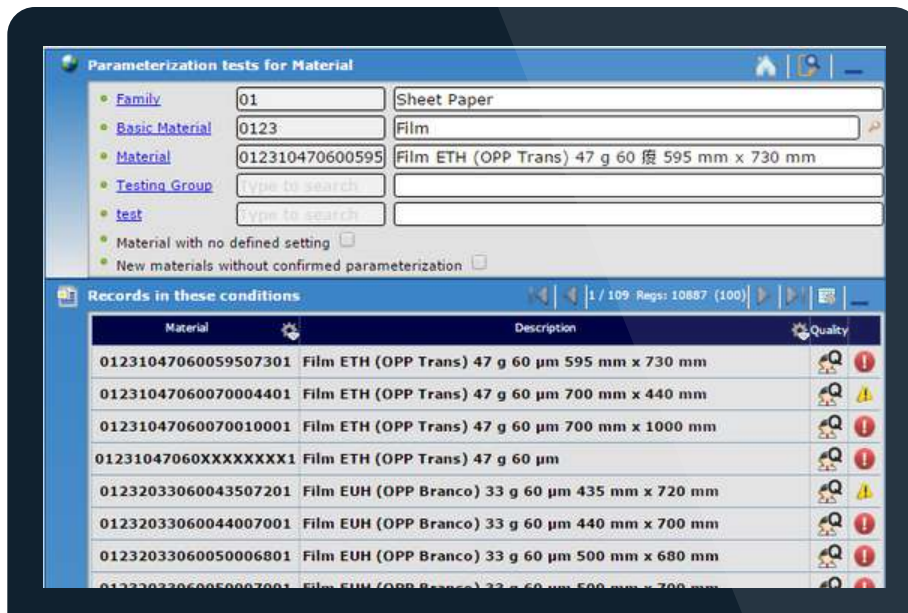


BENEFITS

- **Traceability**
- **Improve product quality**
- **Erase manufacturing errors**
- **Test products**
- **Reduced room for error**
- **Ensure consistency**
- **Fulfill quality requirements**

INSPECTION AND TESTS

- Visual and Instrumental tests
- Record inspections easily
- Automatically assign operations for inspection





NON-CONFORMITIES

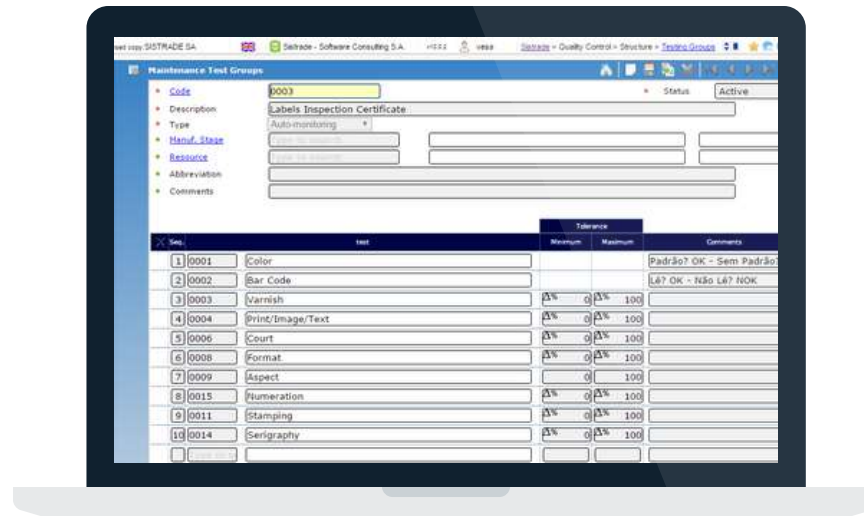
- **Eliminate non-conformity suspicions**
- **Track what was inspected and tested**
- **Manage non-conformities**
- **Register non-conformity source and cause**

The background features a blurred image of a financial chart with blue bars and a line graph. A red banner is overlaid on the chart, containing the word 'COSTS' in white, bold, uppercase letters. The chart shows data points such as 410, 400, 280, and 260. A pen is visible in the foreground, pointing towards the chart.

COSTS

- **Non-conformities costs**
- **Immediate and reactive actions**
- **Global cost management**
- **Integration with accounting**
- **Distribution by cost centers**

QUALITY NORMS & CERTIFICATES



- Internal certificated for conformity tests
- Reference values for product approval

TECHNICAL DATASHEET



- **Quality rules**
- **Recorded test values**
- **Control of technical datasheet versions**

PRODUCT CONTROL



- **Quality of all materials along the company**
- **Management of inspections and tests**
- **Referred quality certificates**

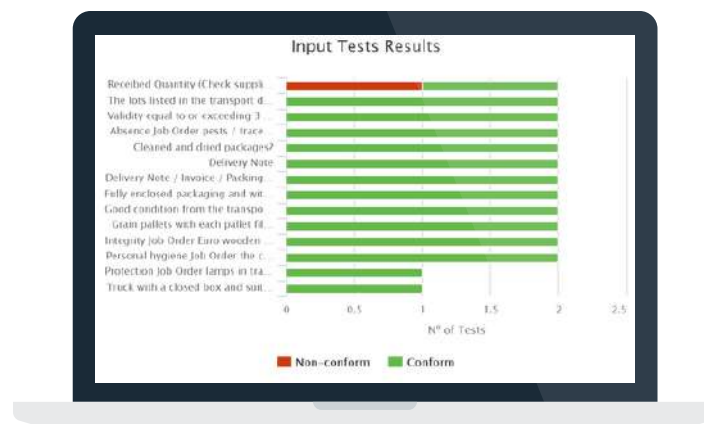
EQUIPMENT CALIBRATION

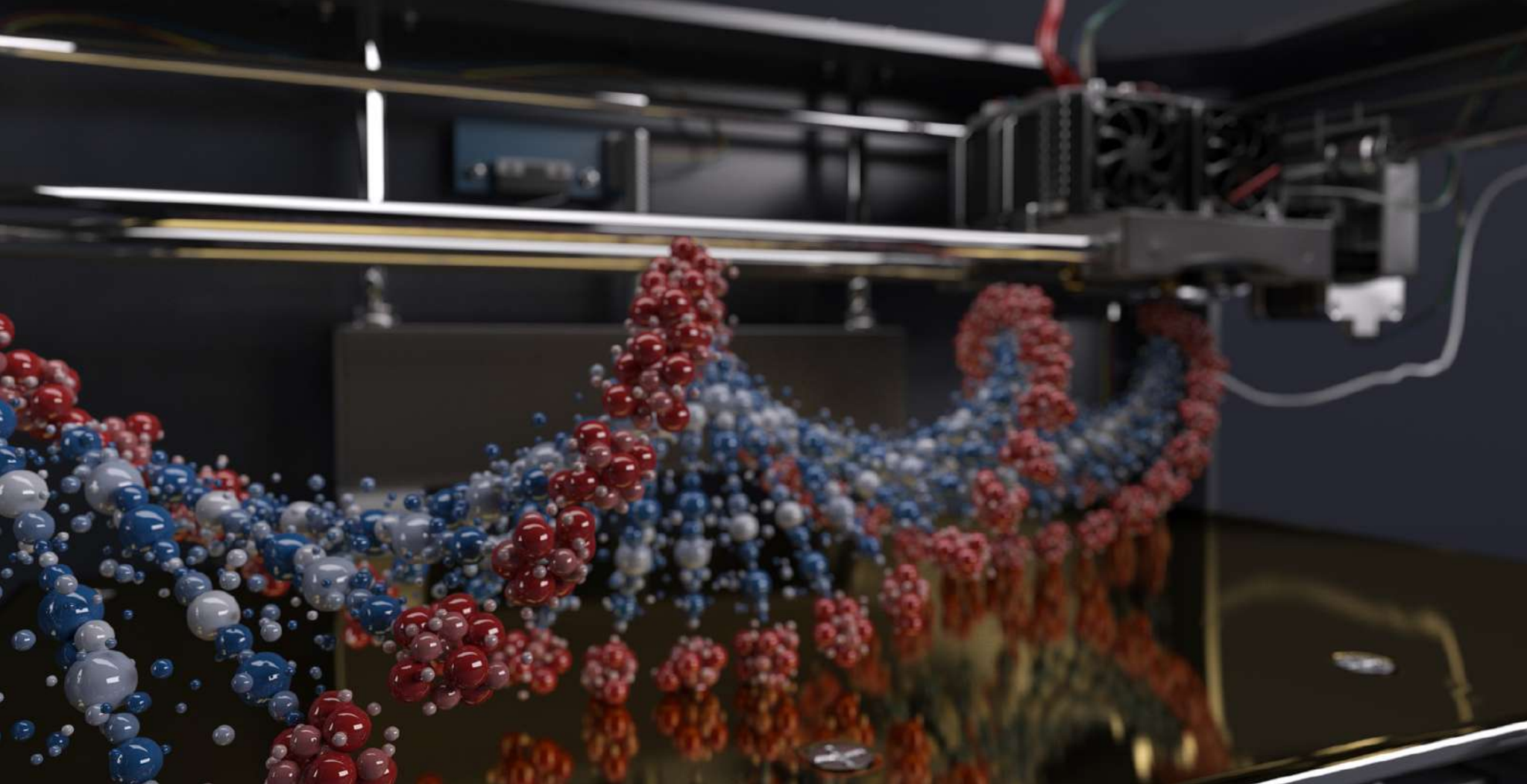
- **Record of calibrations**
- **Historical analysis**
- **Instruments used**
- **Future inspections**

SMARTSTATISTICS

Statistics through dynamic dashboards to support an assertive analysis of all the quality data regarding:

- **Material reception**
- **Semi-manufactured**
- **Finished product**
- **Auto monitoring**
- **Check list**





QUALITY CONTROL FOR INDUSTRY 4.0

WWW.SISTRADE.COM