



SisTrade[®]

software solutions | sistrade.com

FLEXIBLE PACKAGING

MIS|ERP SOFTWARE

MIS | ERP SISTRADE SOFTWARE



With Sistrade integrated management system, we now have one ERP which allows integrating all areas of the company, having real-time and good time information and simplifying processes (...)

(...) allowing management of various types of product we manufacture (packaging, stickers, labels, leaflets) and various printing processes that we have (offset, flexography, letterpress, digital).

Cristina Baeta, Olegário Fernandes S.A.

KEY FEATURES

- Estimating
- Technical data sheet
- Graphical process management
- Extrusion
- Resin mixture
- Repro-Cliché management

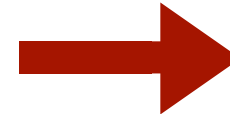
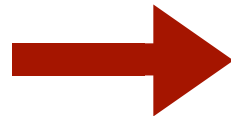
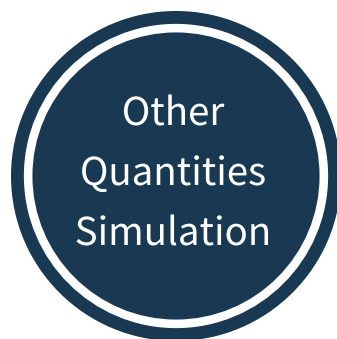
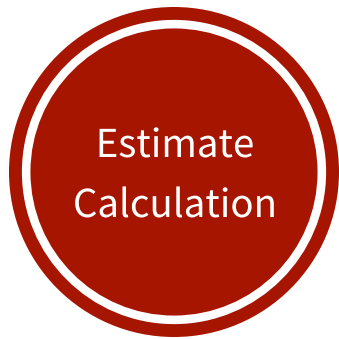


WHY ESTIMATING WITH SISTRADE?

- Estimate any type of work
- Manage cylinders and clichés
- Detailed cost calculation
- Manage product data sheets
- Workflow for approval
- Apply margins

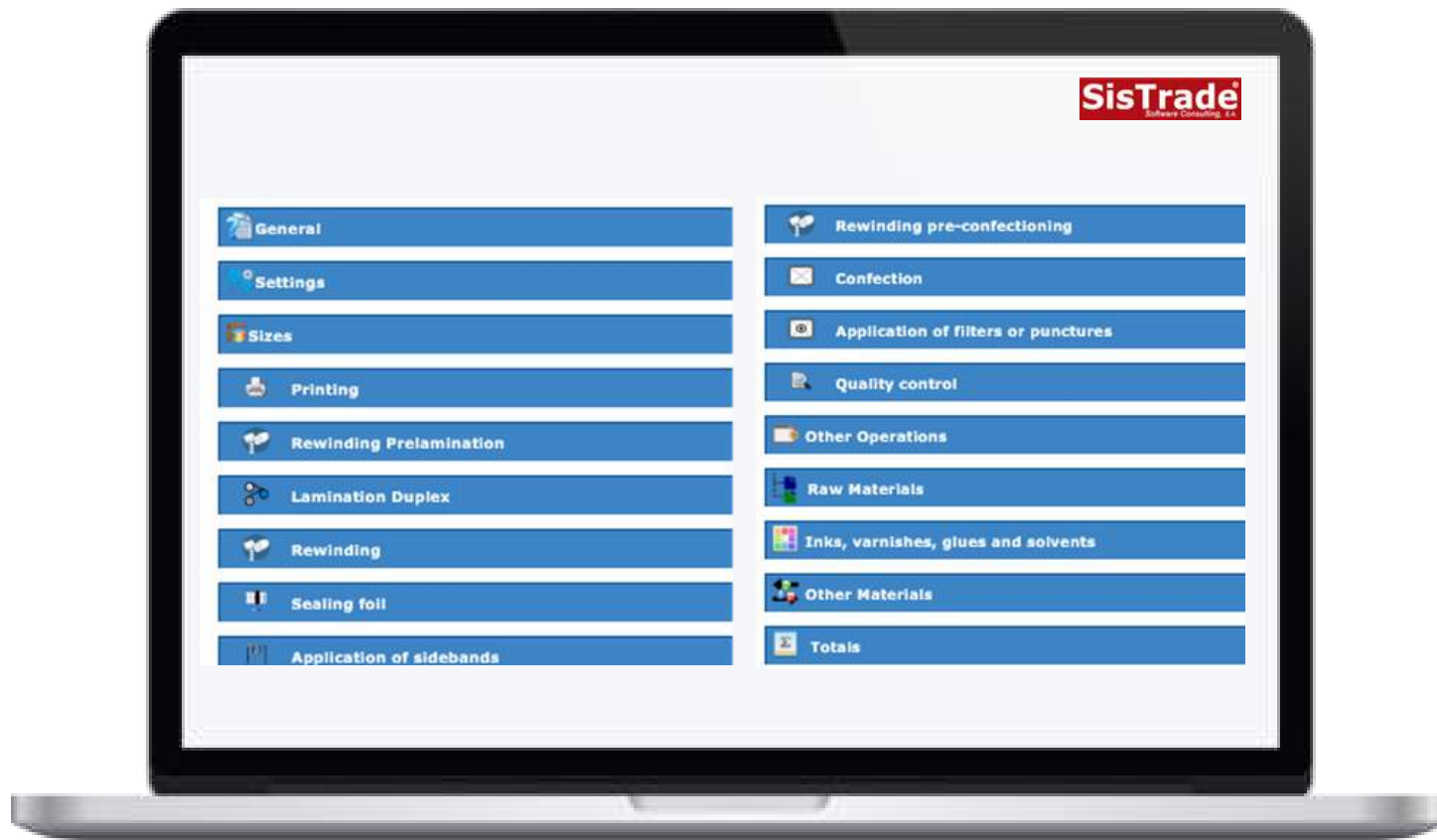


ESTIMATING CYCLE



ESTIMATING

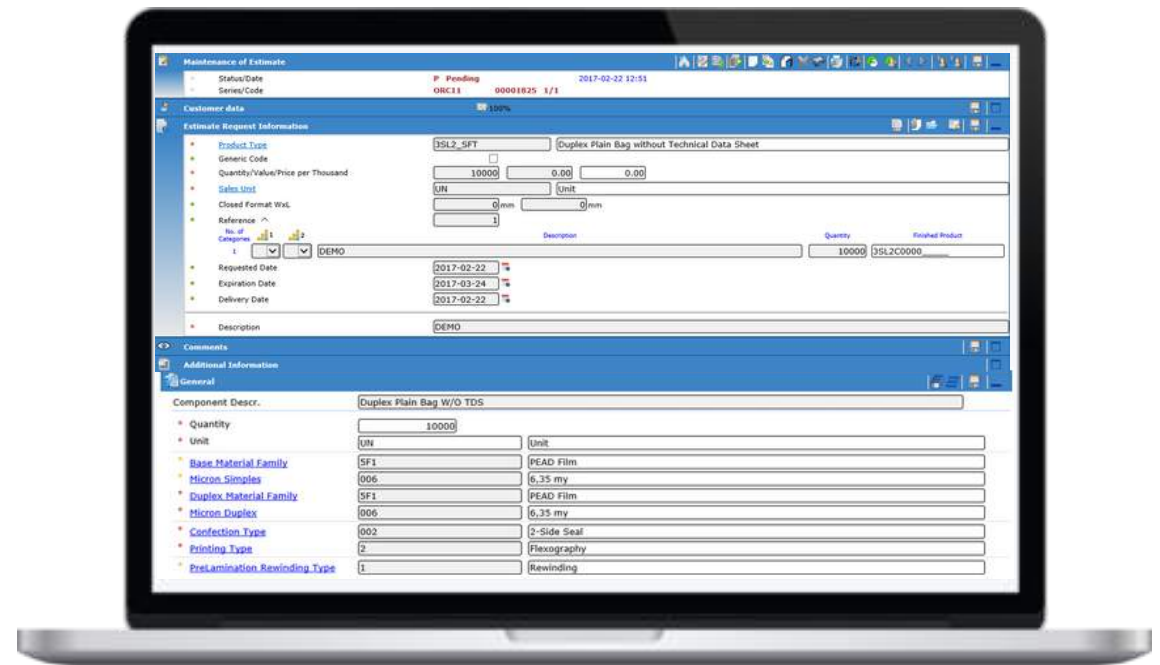
Elaborate estimate: Full Detailed Menu



ESTIMATING

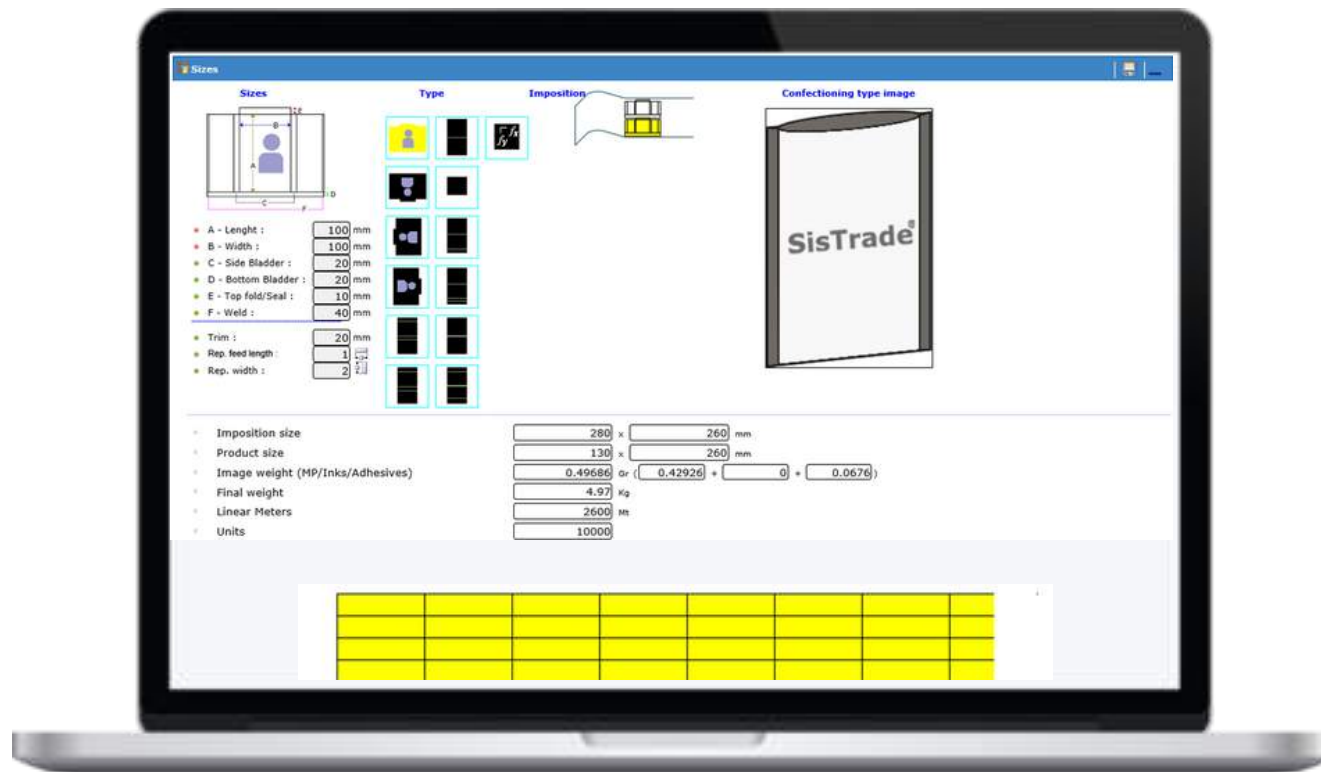
Elaborate estimate: Technical Data of the work

- Customer data
- Quantities
- Base materials
- Confection type
- Printing type
- Pre-lamination type
- Multiple versions



ESTIMATING

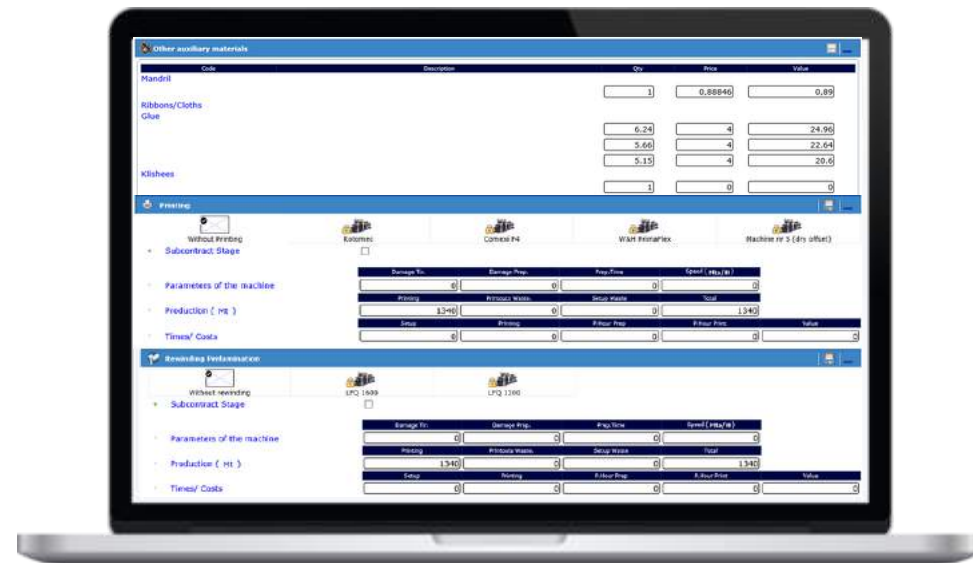
Elaborate estimate: Size and Imposition



ESTIMATING

Elaborate estimate:

- Other materials
- Record of manufacture stages
- Printing machines
- Rewinding pre-lamination
- Subcontracting
- Estimate attachments



ESTIMATING

Elaborate estimate: Detailed Financial Costs

- Raw materials
- Inks
- Varnishes
- Glues
- Solvents
- Subcontracting
- Graphic design

The screenshot displays a software interface for estimating costs. The main window is titled "Inks, varnishes, glues and solvents" and contains a table with columns for "White color", "Pantone", "Special", "Varnish", "Lacquer varnish", "Glue", "Cold Seal/Hot Seal/Paraffin", and "Solvent". The table has columns for "Qty (20%)", "G/100 Covering", "Area", "Quantity", "Pcs. Kg", "Discount", and "Value".

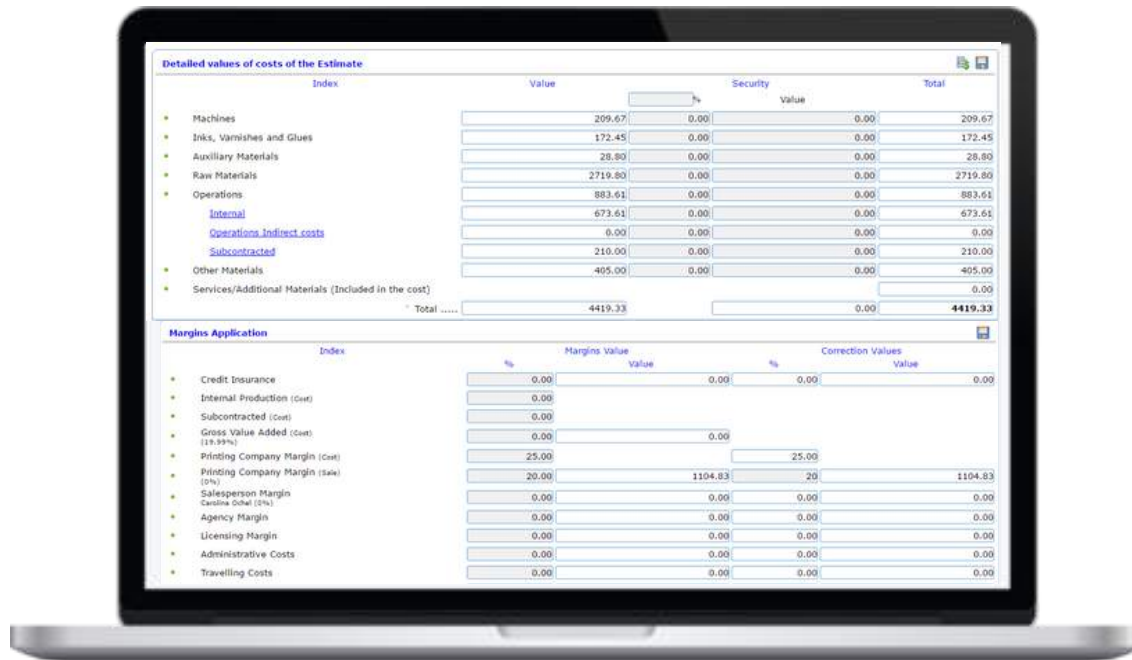
	Qty (20%)	G/100 Covering	Area	Quantity	Pcs. Kg	Discount	Value
White color	0	0	0	0	25	0	0
Pantone	0	0	0	0	25	0	0
Special	0	0	0	0	15	0	0
Varnish	0	0	0	0	15	0	0
Lacquer varnish	0	0	0	0	15	0	0
Glue	0	0	375	1.5	15	0	22.5
Cold Seal/Hot Seal/Paraffin	0	0	0	0	0	0	0
Solvent	0	0	0	0	15	0	0

Below the table, there is a "Totals" section with a sub-table titled "Detailed Value of this Component's Costs".

Index	Value	%
Machines	77	77.39%
Inks ,varnishes, glues and solvents	22.5	22.61%
Base materials	0	0%
Other Operations	0	0%
Other Materials	0	0%
Total	99.5	

ESTIMATING

Elaborate estimate: Detailed Financial Costs



The screenshot displays two tables from a software application. The first table, titled "Detailed values of costs of the Estimate", shows a breakdown of costs by index, value, security, and total. The second table, titled "Margins Application", shows the application of various margins and correction values.

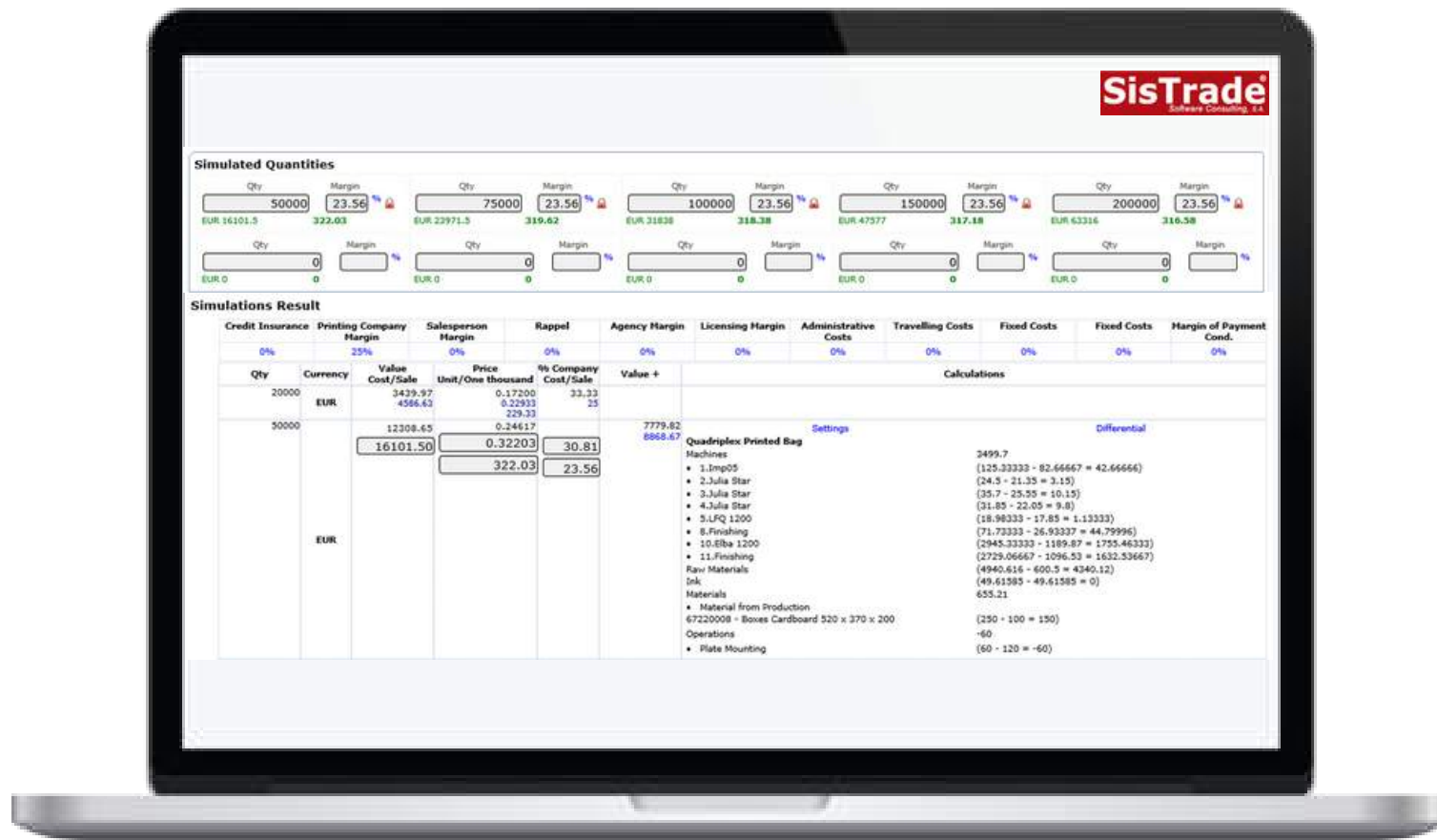
Index	Value	%	Security Value	Total
Machines	209.67	0.00	0.00	209.67
Inks, Varnishes and Glues	172.45	0.00	0.00	172.45
Auxiliary Materials	28.80	0.00	0.00	28.80
Raw Materials	2719.80	0.00	0.00	2719.80
Operations	883.61	0.00	0.00	883.61
Internal	673.61	0.00	0.00	673.61
Operations Indirect costs	0.00	0.00	0.00	0.00
Subcontracted	210.00	0.00	0.00	210.00
Other Materials	405.00	0.00	0.00	405.00
Services/Additional Materials (Included in the cost)				0.00
Total	4419.33		0.00	4419.33

Index	%	Margins Value	%	Correction Values	Value
Credit Insurance	0.00		0.00	0.00	0.00
Internal Production (cost)		0.00			
Subcontracted (cost)		0.00			
Gross Value Added (cost) (18.99%)		0.00		0.00	
Printing Company Margin (cost)	25.00			25.00	
Printing Company Margin (sale) (0%)	20.00	1104.83	20		1104.83
Salesperson Margin	0.00	0.00	0.00		0.00
Casine (cost) (0%)	0.00	0.00	0.00		0.00
Agency Margin	0.00	0.00	0.00		0.00
Licensing Margin	0.00	0.00	0.00		0.00
Administrative Costs	0.00	0.00	0.00		0.00
Travelling Costs	0.00	0.00	0.00		0.00

- Summary of costs
- Application of margins
- Financial indicators

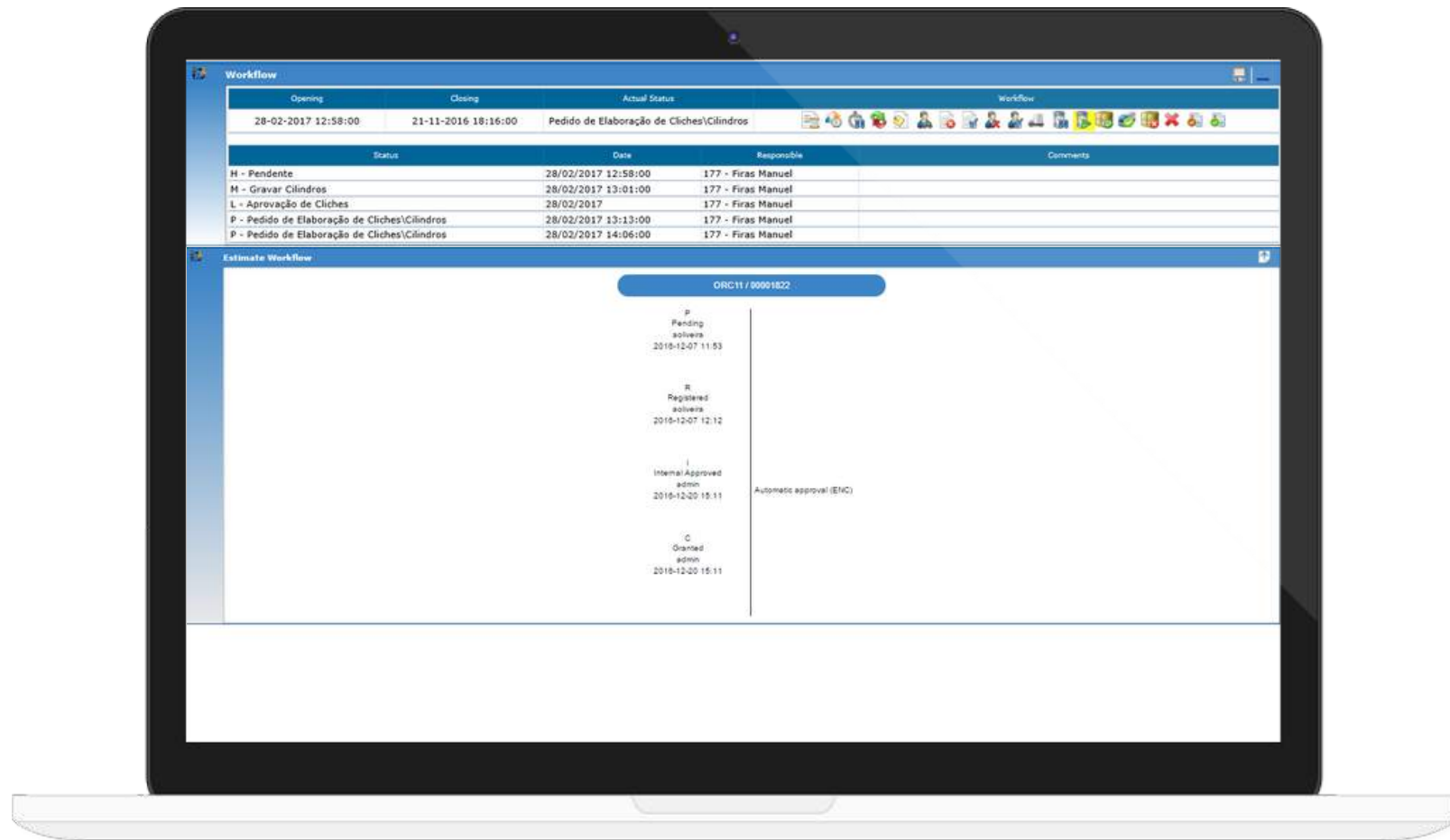
ESTIMATING

Elaborate estimate: Extra quantities simulation



ESTIMATING

Elaborate estimate: Workflow approval



TECHNICAL DATA SHEET

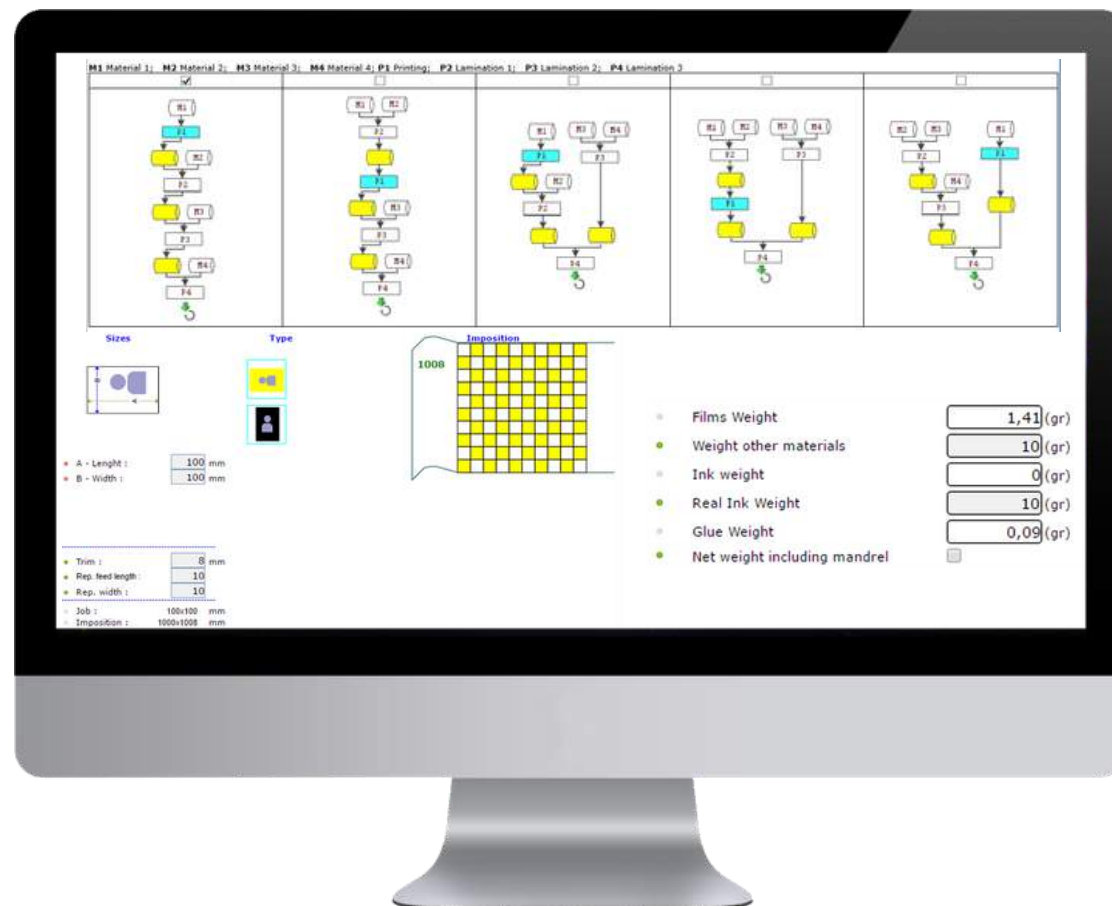
STORE ALL THE INFORMATION RELATED TO AN ESTIMATE

- Product and customer data
- Production processes
- Raw materials
- Clichés assembly
- Printing details
- Pre-lamination
- Lamination
- Rewinding



TECHNICAL DATA SHEET

PRODUCTION PROCESSES FULLY DETAILED



PLASTIC EXTRUSION



- Automatic data acquisition from extruder machine
- Raw materials consumptions and formulation on time
- System automation detects new production
- Make quality control of each produced package
- Supervision control, performance, OEE, downtimes, productions
- Palletisation

PLASTIC EXTRUSION

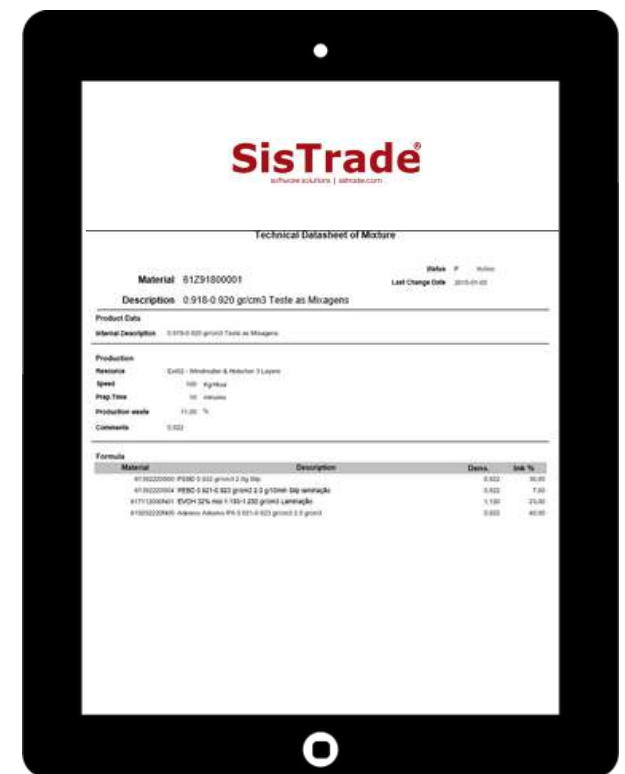
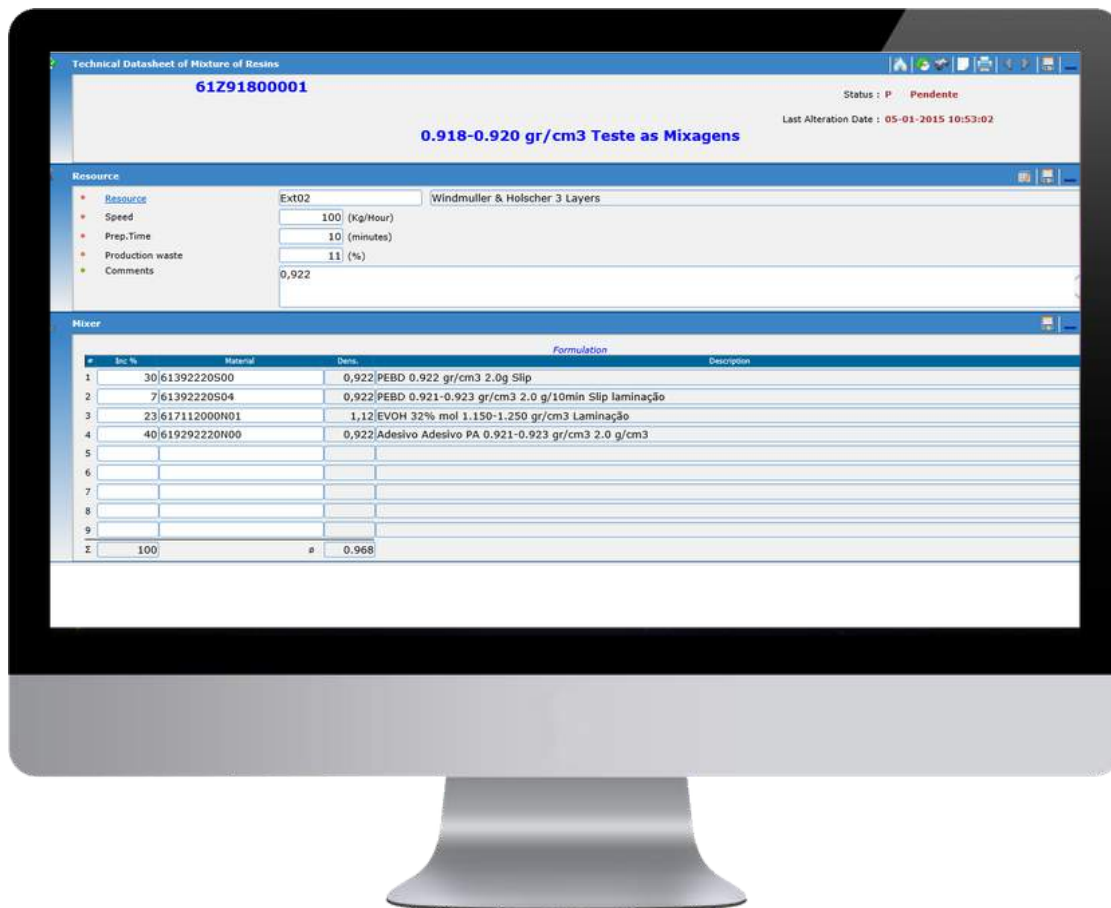
TECHNICAL DATA SHEET

- Extrusion process (cast or blow), machine speed, Corona treatment, blow moulding, blow head temperature and formulation by extruder
- Packaging process providing restriction on weight, diameters or meters to produce per reel
- Composition and formulation of each extruder
- Combine extrusion with printing process



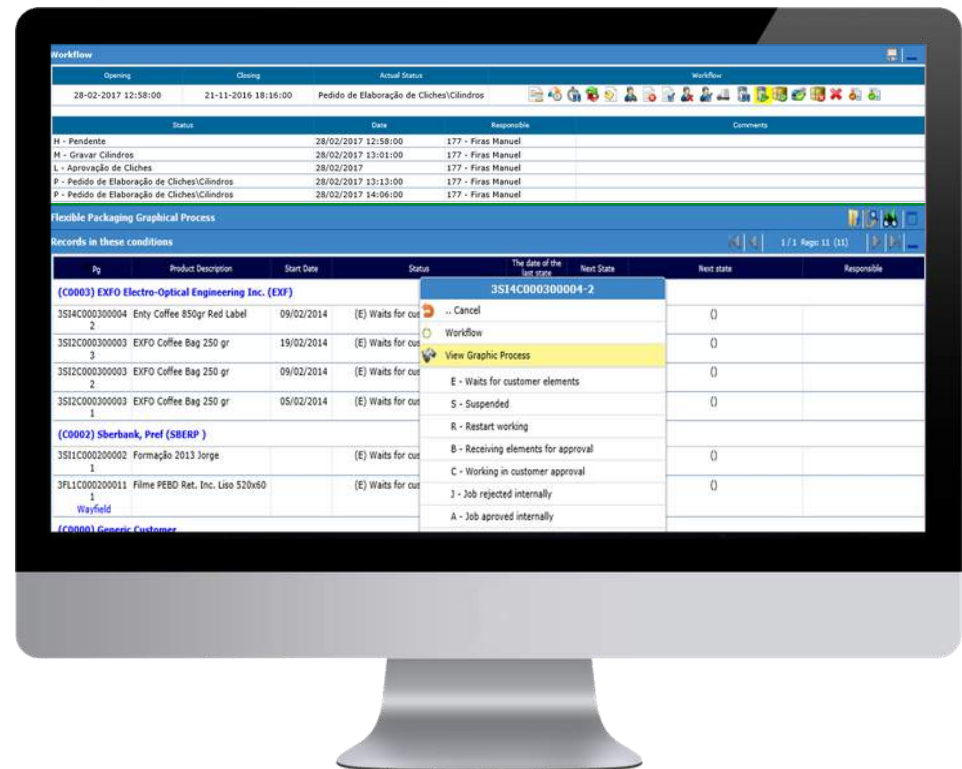
RESIN MIXTURE

TECHNICAL DATA SHEET



GRAPHICAL PROCESS MANAGEMENT

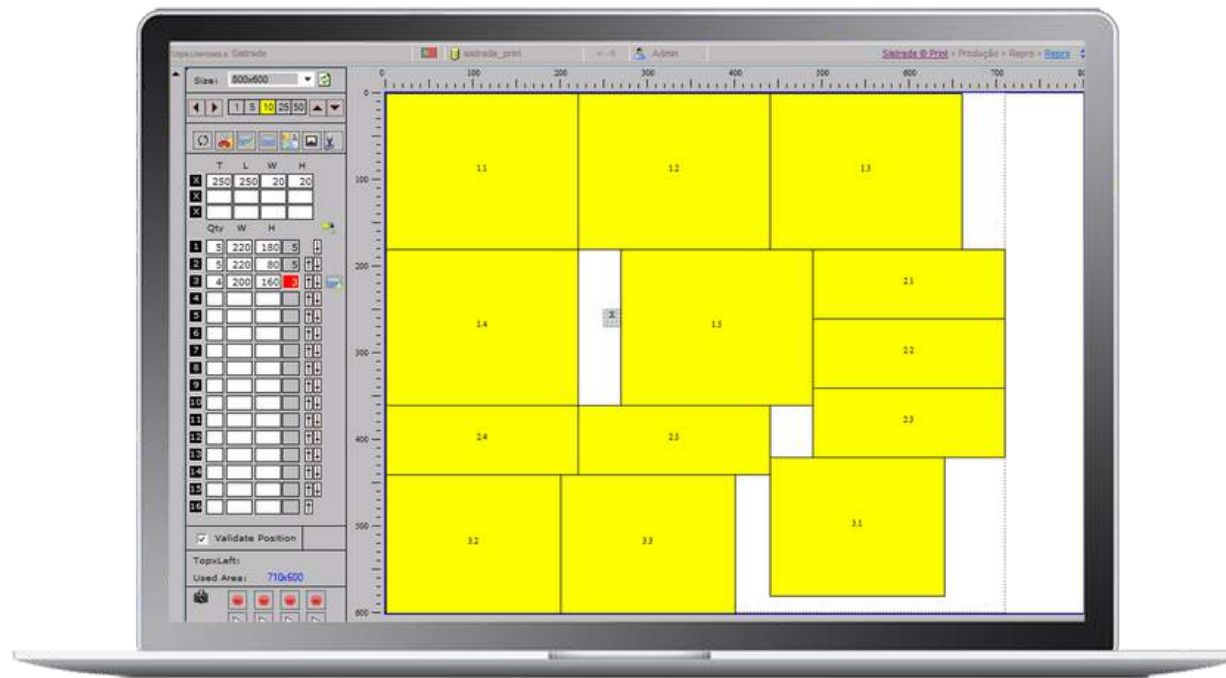
- Printing process status
- Graphical elements and processes
- Font type and size
- Colours and cylinders
- Elements sent or received
- Control of customer approval



CLICHE MANAGEMENT TOOL

Flexography

- Production process more efficient with increased quality



ANALYTICAL AND STATISTICAL INFORMATION



- Full detailed reports
- Manage time
- Control production costs
- Compare costs
- Export data

SMART STATISTICS

- Estimates per period/region/salesperson/customer
- Average and total statistics
- Requested/assigned estimates
- Delivery delay
- Information of recorded estimates



A person's hands are shown holding a smartphone, with the left hand supporting the bottom and the right hand touching the screen. The background is a blurred office interior with a window showing a city skyline. A desk lamp is visible in the lower right corner. A semi-transparent white horizontal band is overlaid across the middle of the image, containing the text.

**FAST ESTIMATING
FOR AN
EFFICIENT BUSINESS**