



SisTrade[®]

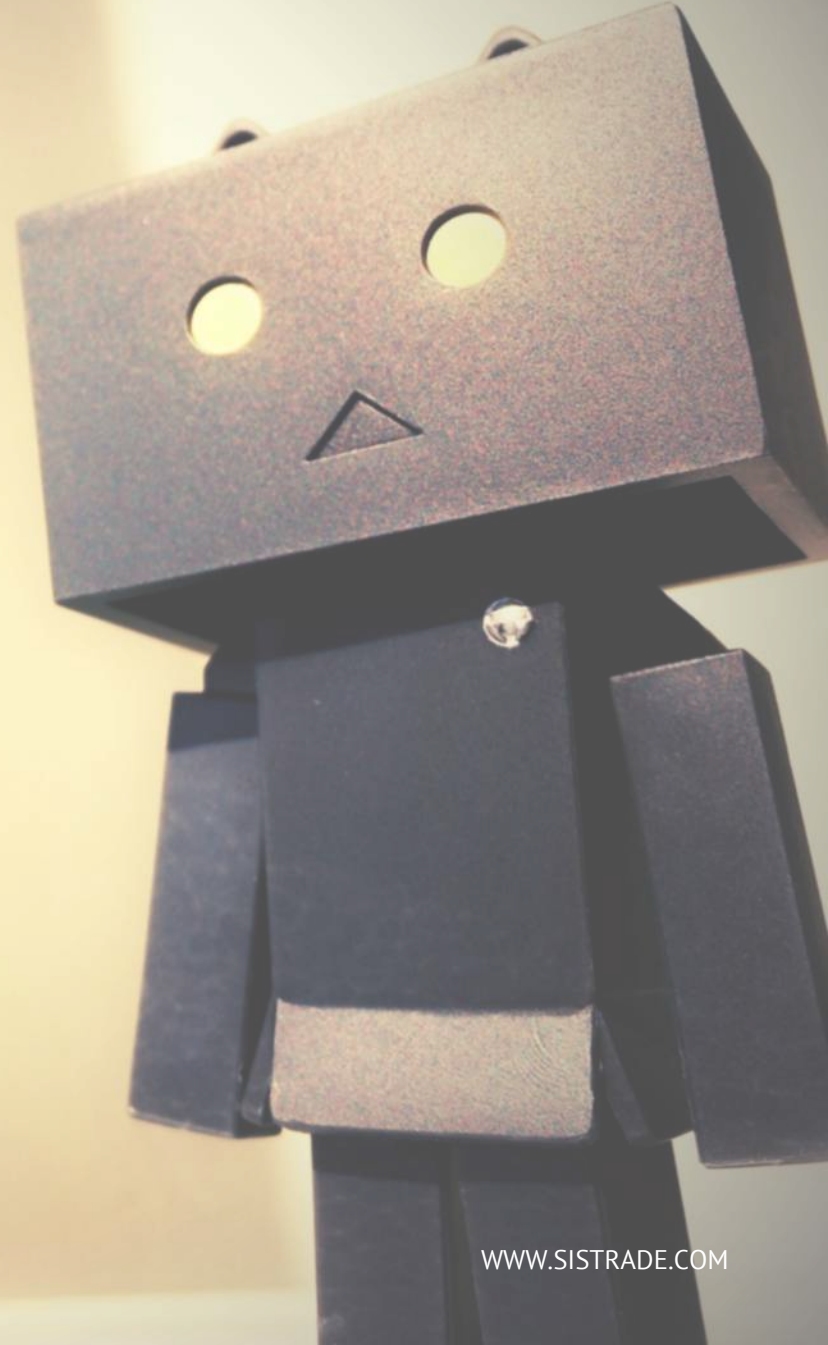
software solutions | sistrade.com

MES

Manufacturing Execution System

Digital Industry

WHAT ARE THE BENEFITS?





Understanding the shop floor in real time permits a thorough control of all the elements involved in production process.

MES is a tool for the decision makers to improve production output.

MES FOR A SUSTAINABLE PRODUCTION

Complement your **management systems** and **production control** with **MES** for planning job orders on time, monitoring real-time production processes according to the preset routing, controlling the movement of materials and hence making a production control more efficient.



INFRASTRUCTURE

Data collection points are installed to receive data from machines or production lines registered by barcode or touch.

ANALYSIS + DESIGN + INSTALLATION



PRODUCTION DATA COLLECTION

JOB ORDERS
OPERATIONS
MATERIALS
MACHINE
OPERATOR

The screenshot displays the SisTrade software interface for production data collection. The interface is organized into several sections:

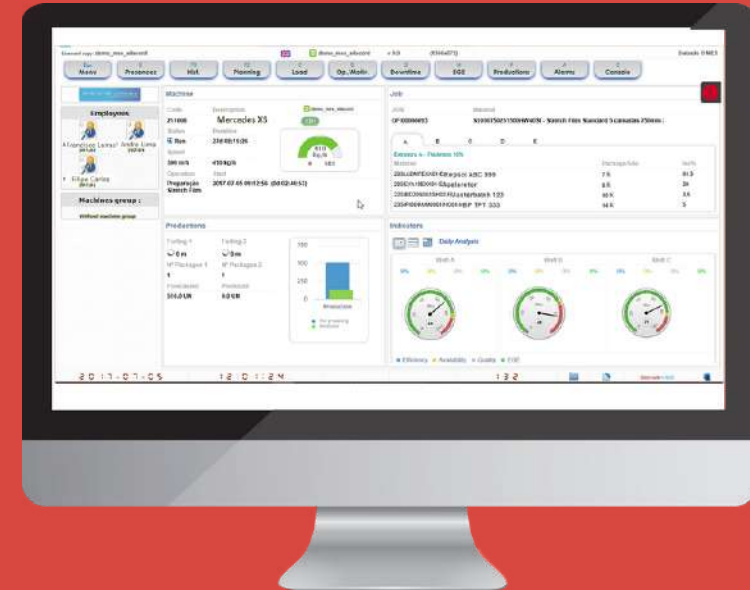
- Navigation Menu:** Located at the top, it includes buttons for Menu, Shift, Planning, Lab., Obs., Req Qty, Details, Ref IM, Mfg., Emp., Op./Reason, Event, and QC.
- Machine Information:** Shows the machine ID as 'M003 Maq HP 6000'.
- Job Details:** Includes fields for Job (FOANP/000003), Description (RD CX Fruit), Customer (Client RD), and Product (RD CX Mafr). It also displays 'Quantity to Produce 64 UN' and 'Requested Quantity 1000 UN'.
- Production Status:** Shows the status as 'Working' and 'RUN'. It includes a table with columns for Total (Hrs), Partial (Hrs), Hour, Status, and Time. The current time is 08:23.
- Actual Quantity:** Displays 'Actual Qty' as 5000.
- Footer:** Shows the date and time as '2017 04 03 5:44:01' and the number '116'.

- Start/end of job order, operation
- Employee assigned for machine
- Materials for incorporation in machine
- Production records
- Quality control tests

PRODUCTION DATA COLLECTION

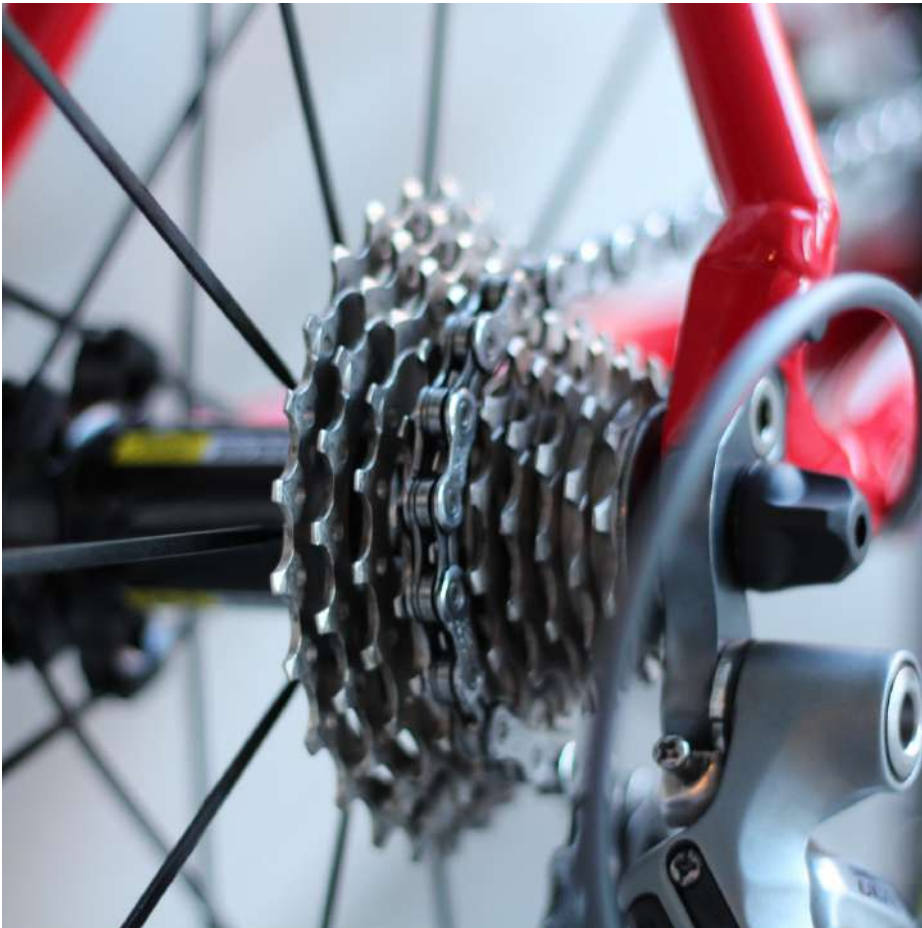
DIRECT DATA
ACQUISITION
THROUGH SENSING
EQUIPMENT

Functional machine status
Instantaneous & average speed
Produced quantity
Setup and production time
Downtime reasons
Consumed quantity



SCADA - INDUSTRIAL SUPERVISION

PROCESS MONITORING THROUGH SYNOPTIC PANELS



Local or remote supervision, multi-factory

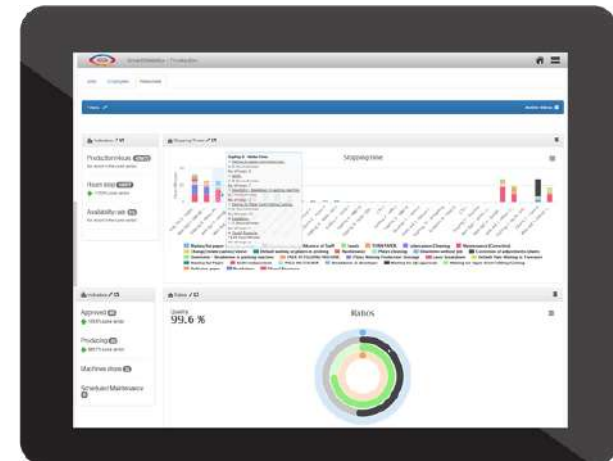
Produced and rejected quantities

Real-time machine speed

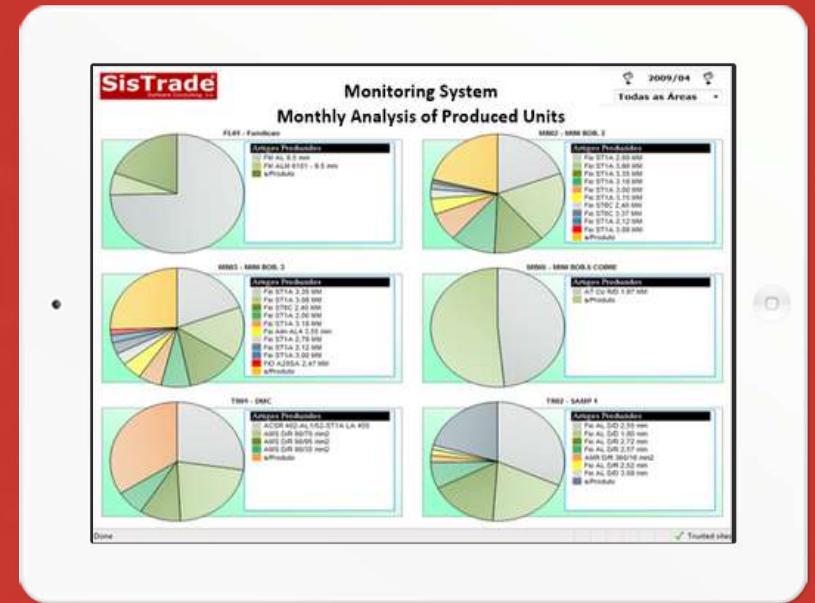
Profitability analysis

Productive vs. unproductive time analysis

Efficiency per machine



ANALYSIS



PRODUCTION DOWNTIME EVENTS

OVERALL EQUIPMENT EFFECTIVENESS (O.E.E.)

ANALYSIS





SisTrade[®]

software solutions | sistrade.com

MES

SOLUTION FOR INDUSTRY 4.0
