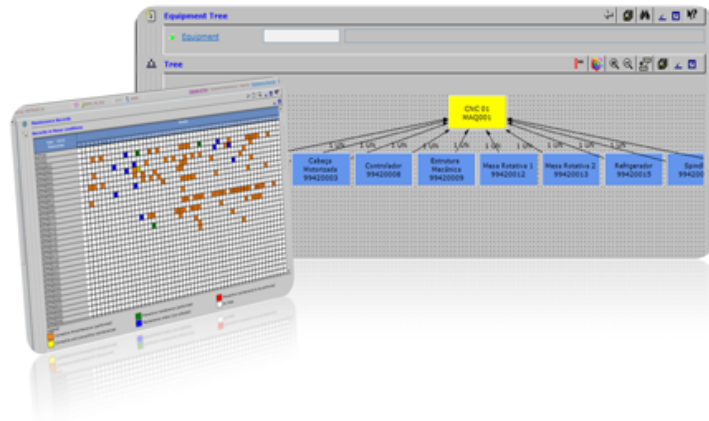


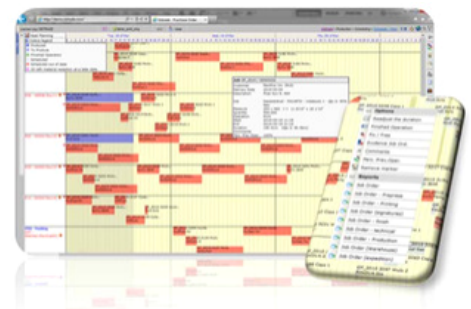
Equipment Maintenance



SISTRADÉ® HAS A MAINTENANCE CONTROL TOOL FOR INFRASTRUCTURE, EQUIPMENT OR COMPONENTS, WHICH ALLOWS THE DEFINITION OF A MAINTENANCE PLAN, REGISTRATION OF PREVENTIVE AND CORRECTIVE MAINTENANCE, AND LAUNCHING MAINTENANCE ORDERS

KEY FEATURES:

- ASSET HIERARCHY
- EQUIPMENT TREE
- PREVENTIVE AND CORRECTIVE MAINTENANCE
- RECORD OF INCIDENCE
- MAINTENANCE ORDERS
- RECORD OF INTERVENTIONS
- STOCKS AND SPARES MANAGEMENT
- INTEGRATION WITH SCHEDULING
- SUBCONTRACTING
- DOCUMENTARY INFORMATION



Equipment Maintenance

EQUIPMENT TREE

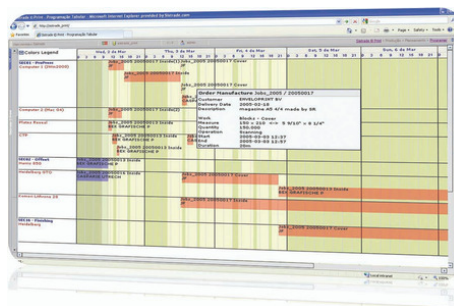
- Fast access to the structure of each resource and to prepare maintenance plans that can be sent to each “sub-equipment”/component or, to the equipment itself in its entirety

PREVENTIVE MAINTENANCE

- Proactively identify potential failures in the performance of its assets and evaluate the need for preventive action
- Sistrade® system allows the definition of maintenance plans/inspections that can have a configurable periodicity (time period, km reached, hours of use, etc.) and related alerts that are sent to an e-mail address

INTEGRATION WITH SCHEDULING

- Sistrade® system includes GANTT diagram to facilitate the scheduling of all tasks involved in maintenance
- Diagram’s information can be crossed with the production scheduling allowing data analysis between production and maintenance



ANALYSIS

- Duration and no. of interventions and their nature (preventive/corrective)
- Breakdown rate
- MTTR - Mean Time to Recovery
- MWT - Mean Waiting Time
- MTBF - Mean Time Between Failures
- History of interventions of an asset
- Daily indication and time of interventions by employee/asset and asset/employee
- Response time to intervention
- Maintenance forecasts, costs and registers